

The superior IT alarm system
One system that detects all **critical**

threats in the room and rack



Important for each IT room!

- ✚ Ensuring IT availability - risk protection
- ✚ World wide information by GSM
- ✚ Easy to install (wireless communication)

Monitoring of all risk areas in IT- and server-rooms
with the innovative Kentix MultiSensor system.

- Brilliantly simple and secure with the MultiSensor technology
- Early detection of **critical** threats
- Fast installation – easy setup
- Meets the requirements for IT baseline protection and ISO2700x
- Integration into existing monitoring solutions

One device that detects all threats in the server-room and rack – The Kentix MultiSensor

KENTIX
Innovative Security





Temperature



Motion Detection



Humidity



Carbon Monoxide



Dew point



Power Supply

Protecting your IT against the most common risks:

- Enviromental disruption
- Human errors
- Physical theft
- Sabotage

Benefits:

- Threat detection - rapid response times, low costs
- Lower staff costs due to automatic monitoring
- Reduce staffing requirements - Low reduced liability and risker operating costs through remote monitoring
- Low investment costs - easy and hassle free installation
- ROI within 1 year - **in prevention and security assurance**

Effective protection of the physical risks in IT- and server-rooms.

The Kentix MultiSensor merges all the important basic physical sensors in one unit. Combined with Zig Bee wireless technology, the result is one of the most effective systems for IT monitoring. The MultiSensor (KMS) is also available with direct LAN connection as an alternative to the wireless solution, and can be directly connected to a network with the Kentix AlarmManager (KAM).

The installation and operation is easy and can be made utilizing conventional patch cables without clamping.

Easy installation and low system cost with an innovative „All In One“ solution.

All MultiSensor Data is collected and evaluated in the Alarm Manager. The Alarm Manager also performs monitoring of the sensor network, and cycles through error messages and system conditions. An integrated GSM modem transmits alarm messages.

Responsible staff and managers are informed in real time on any error conditions. Messages are sent as SMS, E-Mail or SNMP traps. The AlarmManager can be controlled remotely by any mobile phone with simple SMS commands, to get status updates; or to arm and disarm the system.

commands are protected by password and phone number.

One device that detects all threats in the server-room and rack – The Kentix MultiSensor **KENTIX**



Temperature

- Monitoring the temperature
- Control of cooling or heating



Humidity

- Monitoring the humidity
- Monitoring air conditioning



Dew Point

- Monitoring the dew point
- Avoid condensation



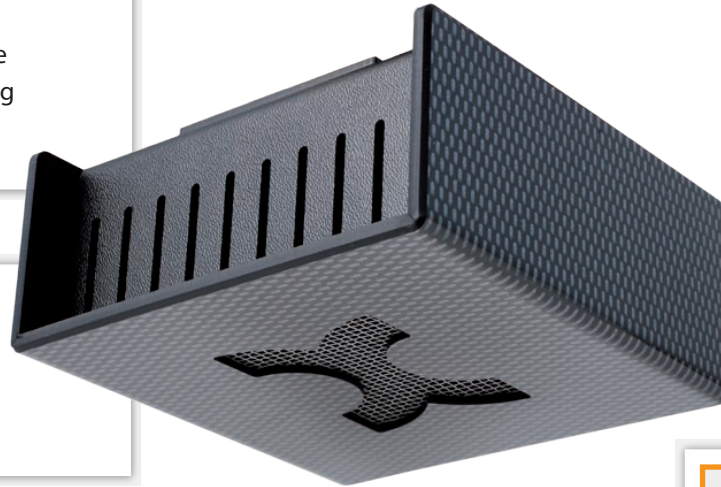
Power Supply

- Monitoring the external power supply
- Bridging and reporting of power failure



Carbon Monoxide (CO)

- Fire detection via high-sensitivity CO sensor
- Early detection of fires



External signal inputs

- Allows connection of external dry contacts
- Door contacts, alarm messages from external systems



External Alarm I/O outputs

- Control of external devices such as alarm sirens, flashing lights
- Remote control of external devices



Acoustic signalization

- Integrated Buzzer for acoustic alarm



Infrared motion detector

- Fast motion detection
- Reliable detection of unauthorized people



ZigBee® wireless transmission

- Encrypt transmission of sensor data to the AlarmManager
- Long range and security through mesh networking

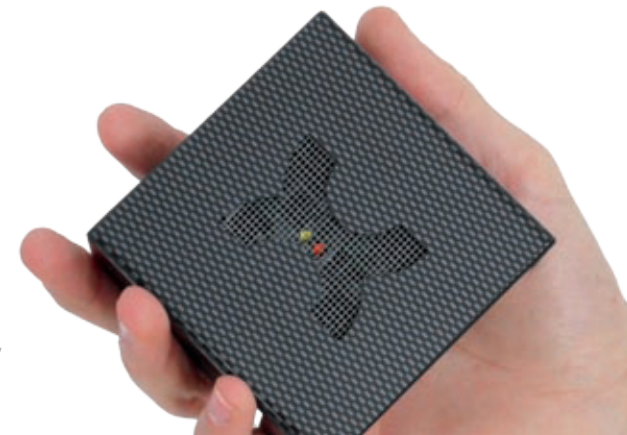


Sabotage monitoring

- Continuous monitoring for tampering and sabotage of MultiSensor and AlarmManager



360° physical IT-security



System components

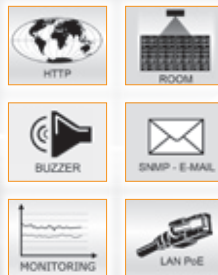


| Device | AlarmManager-PRO | AlarmManager-BASIC | MultiSensor-LAN | MultiSensor-LAN-RF |
|--|--|--|--------------------------------------|---|
| Type | KAM-PRO | KAM-BASIC | KMS-LAN | KMS-LAN-RF |
| Funktion | GSM alarm- and control center for MultiSensor, KeyPad, Accessories | GSM alarm- and control center for MultiSensor, KeyPad, Accessories | Multifunctional-Sensor with Ethernet | Multifunctional-Sensor with Ethernet and ZigBee radio as repeater |
| Room / facility size | up to 1000m² | up to 200m² | 20m², IT-Rack | 200m², IT-Rack |
| Number of connectable multi sensors | 30 | 10 | - | 10 |
| Configuration | PC-Software, Web (Windows, Mac, Linux) | PC-Software, Web (Windows, Mac, Linux) | Web-Server AlarmManager | Web-Server AlarmManager |
| Build in web-server | ✓ | ✓ | ✓ | ✓ |
| Server monitoring (live-check) | ✓ | ✗ | ✗ | ✗ |
| Stand-alone without AlarmManager | ✗ | ✗ | ✓ | ✓ |
| IP-video camera trigger | ✓ | ✗ | ✓ | ✓ |
| SMS alarming (alarm, remote-control) | ✓ | ✓ | ✗ | ✗ |
| E-Mail alarming | ✓ | ✓ | ✓ | ✓ |
| VDS 2465-S2 alarming (TCP) | ✓ | ✗ | ✗ | ✗ |
| Smartphone App | ✓ | ✓ | ✓ | ✓ |
| Syslog (RFC5424) | ✓ | ✗ | ✓ | ✓ |
| Datalogger with long-term storage | ✓ | ✓ | ✓ | ✓ |
| SNMP Trap (V2/V3) | ✓ | ✓ | ✓ | ✓ |
| SNMP MIB (V2/V3) | ✓ | ✗ | ✓ | ✓ |
| Alarm output with relay | 2 | 2 | ✗ | ✗ |
| Alarm output with open-collector | ✗ | ✗ | 2 | 2 |
| External alarm input (for dry contact) | 2 | 2 | 2 | 2 |
| Connection for leakage sensor | ✓ | ✓ | ✓ | ✓ |
| PoE (Power over Ethernet) | ✗ | ✗ | ✓ | ✓ |
| External power supply | ✓ | ✓ | ✓ | ✓ |
| Integrated UPS | ✓ | ✓ | ✗ | ✗ |
| LAN connection (10/100Mbit, IP-V4/V6) | ✓ | ✓ | ✓ | ✓ |
| ZigBee (Mesh Radio) | ✓ | ✓ | ✗ | ✓ |
| Kentix system socket | ✓ | ✓ | ✓ | ✓ |
| Sabotage control | ✓ | ✓ | ✓ | ✓ |
| Sensor - Temperature (0 bis 99°C) | - | - | ✓ | ✓ |
| Sensor - Rel. Humidity (0-100%) | - | - | ✓ | ✓ |
| Sensor - Dew point (°C) | - | - | ✓ | ✓ |
| Sensor - Carbon monoxide (CO >20ppm) | - | - | ✓ | ✓ |
| Sensor - Motion (PIR 360°, 12m) | - | - | ✓ | ✓ |
| Sensor - Vibration (vibration) | ✓ | ✓ | ✓ | ✓ |
| Voltage control | ✓ | ✓ | ✗ | ✗ |
| Power distribution unit switchable (PDU) | ✗ | ✗ | ✗ | ✗ |
| Power measurement (Consumpt., Analyse) | ✗ | ✗ | ✗ | ✗ |
| RFID (Mifare, Legic, Hitac) | ✗ | ✗ | ✗ | ✗ |
| Size (L x W x H in mm) | 130 x 90 x 45 | 130 x 90 x 45 | 90 x 90 x 45 | 90 x 90 x 45 |

| MultiSensor-RF | MultiSensor-RACK | KeyPad | MultiSensor-DOOR | I/O-Module |
|--|---|--|--|--------------------------------------|
| KMS-RF | KMS-RACK | KKP | KMS-DOOR | KIO7052/53 |
| Multifunctional-Sensor with ZigBee radio | Multifunctional-Sensor with Ethernet and intelligent power-unit | Keypad for access control with pin-code and RFID | Multifunctional-Sensor for movement and position | Extention module for external alarms |
| 20m², IT-Rack | IT-Rack | Door | Door, Window, Rack, movable objects | - |
| - | - | - | - | - |
| - | Web-Server AlarmManager | - | - | Web-Server AlarmManager |
| AlarmManager | | AlarmManager | AlarmManager | |
| ✗ | ✓ | ✗ | ✗ | ✓ |
| ✗ | ✗ | ✗ | ✗ | ✗ |
| ✗ | ✓ | ✗ | ✗ | ✗ |
| ✗ | ✓ | ✗ | ✗ | ✗ |
| ✗ | ✗ | ✗ | ✗ | ✗ |
| ✗ | ✓ | ✗ | ✗ | ✗ |
| ✗ | ✗ | ✗ | ✗ | ✗ |
| ✗ | ✓ | ✗ | ✗ | ✗ |
| ✗ | ✗ | ✗ | ✗ | ✗ |
| ✗ | ✓ | ✗ | ✗ | ✗ |
| ✗ | ✗ | ✗ | ✗ | ✗ |
| ✓ (KAM-PRO) | ✓ | ✗ | ✓ (KAM-PRO) | ✓ (KAM-PRO) |
| ✗ | ✗ | ✗ | ✗ | ✗ |
| 2 | 2 | ✗ | ✗ | 8 / 0 |
| 2 | 2 | ✗ | ✗ | 8 / 16 |
| ✓ | ✓ | ✗ | ✗ | ✓ |
| ✗ | ✗ | ✗ | ✗ | ✓ |
| ✓ | ✓ | Battery (AAA) | Battery (Li) | ✓ |
| ✓ | ✗ | ✗ | ✗ | ✗ |
| ✗ | ✓ | ✗ | ✗ | ✓ |
| ✓ | ✗ | ✓ | ✓ | ✗ |
| ✓ | ✓ | ✗ | ✗ | ✗ |
| ✓ | ✓ | ✗ | ✗ | ✗ |
| ✓ | ✓ | ✗ | ✗ | ✗ |
| ✓ | ✗ | ✗ | Gyrosensor | ✗ |
| ✓ | ✓ | ✗ | ✓ | ✗ |
| ✓ | ✗ | ✓ | ✓ | ✗ |
| ✗ | ✓ | ✗ | ✗ | ✗ |
| ✗ | ✓ | ✗ | ✗ | ✗ |
| ✗ | ✗ | ✓ | ✗ | ✗ |
| 90 x 90 x 45 | 19“ Rack, 1HU | 135 x 90 x 19 | 55 x 25 x 20 | 72 x 123 x 35 |

Choose your application:

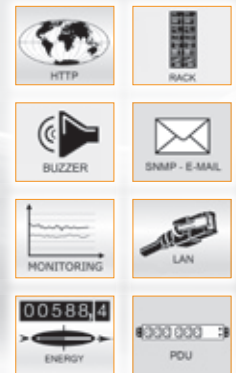
Stand alone sensor, ideal for network monitoring



- Rack- and Room monitoring
- Stand-Alone - Webserver
- Power-over-Ethernet
- E-Mail / SNMP Alarm

MultiSensor-LAN

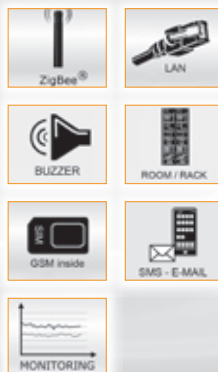
Comprehensive IT rack monitoring with early detection



- All-in-One rack monitoring
- E-Mail / SNMP Alarm
- Integrated 12 way PDU, switchable
- Energy monitoring with 2 x 2.300VA

MultiSensor-RACK

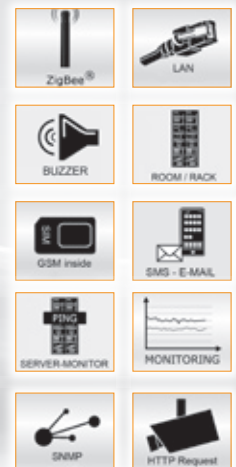
Physical IT compliance solution for rooms from 20-200sqm



- Rack- and Room monitoring
- Up to 10 MultiSensors with Radio
- SMS / E-Mail / SNMP
- Up to 10 user accounts

CompleteSet-BASIC

Physical IT compliance solution for rooms from 20-1.000sqm



- Rack- and Room monitoring distributed facilities
- Up to 30 MultiSensors
- SMS / E-Mail / SNMP
- Up to 20 user accounts

CompleteSet-PRO

Kentix is manufacturer of professional security solutions for the monitoring of IT and technical infrastructure rooms as well as office space. Kentix develops and manufactures its products exclusively in Germany with the highest quality standards. Authorities and enterprises from all sectors of the economy secure with the Kentix „MultiSensor Technology“ their IT systems against physical threats. The Kentix MultiSensor merges many different sensors in one functional unit and makes it very efficient com-

pared to the market. Innovative Security The use of wireless radio systems and modern web technology enables lowcost integration of systems. Kentix products avoid disruptions in the operating environment, secure systems against theft and sabotage, and report the impact of human error - and thus ensure optimal IT availability. Kentix increases IT availability significantly and is amortised within a short period of time.

Kentix US Distributor:

INTERMAS - modular assembly systems

Intermas US, LLC | 5174 McGinnis Ferry Rd #117 | Alpharetta, Ga. 30005 USA

ph 770-888 6566 | toll free 1-800-811 0236 | f 770-888 6992

m intermas@intermas-us.com | www.intermas-us.com